



OGA
Western Australia
The Association for Gaff-Rig
and Traditional Sailing

Peel Harvey Raid

Sat/Sun 12th/13th October 2024

WHERE: Port Bouvard Marina Dawesville

WHEN: Saturday 12th October, 9.30am for a 10.30am start

You are invited to sail the wonderful waters of the Peel inlet and Harvey Estuary.

The plan is to launch from the Port Bouvard Marina Launching Ramps and sail the waters of the Estuary culminating in an overnight camp on the east side of Harvey Estuary. You can come for the whole weekend or just join us for a day sail.

The marina has 4 excellent ramps with lots of car/trailer parking. The Port Bouvard marina charges \$10 for the use of these facilities payable at the Marina office on the day. Hours are 7.30am to 4.30 pm daily. The marina managers say they have not had and security issues with cars and trailers being left overnight.



Please contact Michael Arthur if you intend to take part providing the following details as well as a contact number:

Boat name	Sail number	DoT registration	Skipper's & crew names	RST	Radio type and call sign	Insurance confirmation	Emergency contact for all on board
-----------	-------------	------------------	------------------------	-----	--------------------------	------------------------	------------------------------------



OGA
Western Australia
The Association for Gaff-Rig
and Traditional Sailing

A review of the weather conditions will take place in the week prior to the event and at 5pm on Friday 11th October. If any last minute communications are necessary, these will take place via SMS/phone.

The options for the day are extensive as we have the Peel Inlet, the Harvey Estuary as well as the Murray and Serpentine Rivers in the vicinity. Decisions will be made on the day depending on the weather conditions as to the most suitable areas to visit. We will sail to different areas each day but return to the Port Bouvard marina at the conclusion of the weekend.

The overnight camping area is at Paul Day's property on the Harvey Estuary. There are 5 sturdy moorings available in his "marina" as well as sandy banks to pull boats ashore. It is a very protected anchorage.

Transport for overnight camping gear, food and drinks from Port Bouvard Marina to Paul Day's place on Saturday morning, and in reverse on Sunday, is being arranged by road.

SAFETY: This event will be held in compliance with Section 4 of the OGA Operations Manual - available on our website and will be an event type 3: OGAWA Events in Coastal and Protected Waters where no rescue craft are available.

All participants are responsible for their own boat and the safety of their crew. Skippers are to ensure that their boat is well prepared for this event. A safety briefing will be held prior to departure. Study the attached Boating Guide.

- The organizers have the right to cancel the sail if the weather conditions are adverse, however it is the Skipper's responsibility to decide whether to start or withdraw.
- **Note;** Any participating boats with outboard motors are asked to fit them so that they may act as assistance craft for other boats in the fleet if required.
- All participants must be confident that they can recover their boats from a capsize without outside assistance, and the ability/equipment to retrieve crew or others from the water after a man-overboard incident.
- In preparing your boats for the day we require as a minimum that you comply with the new **DOT Safety Regulations for Protected Waters(See below)** as well as the equipment listed in the OGA self-assessment form.
- A VHF marine radio (waterproof or in a sealed bag). We will use **channel 72 VHF**
- Good anchoring gear to either anchor for our shore excursions or overnight or to securely moor if pulled ashore
- A robust torch
- Water proof clothing
- First aid kit & suncream
- Spare rope (towing, mooring lines, and to cover breakages)
- Dry bags for any additional clothing required on the day.











OGA

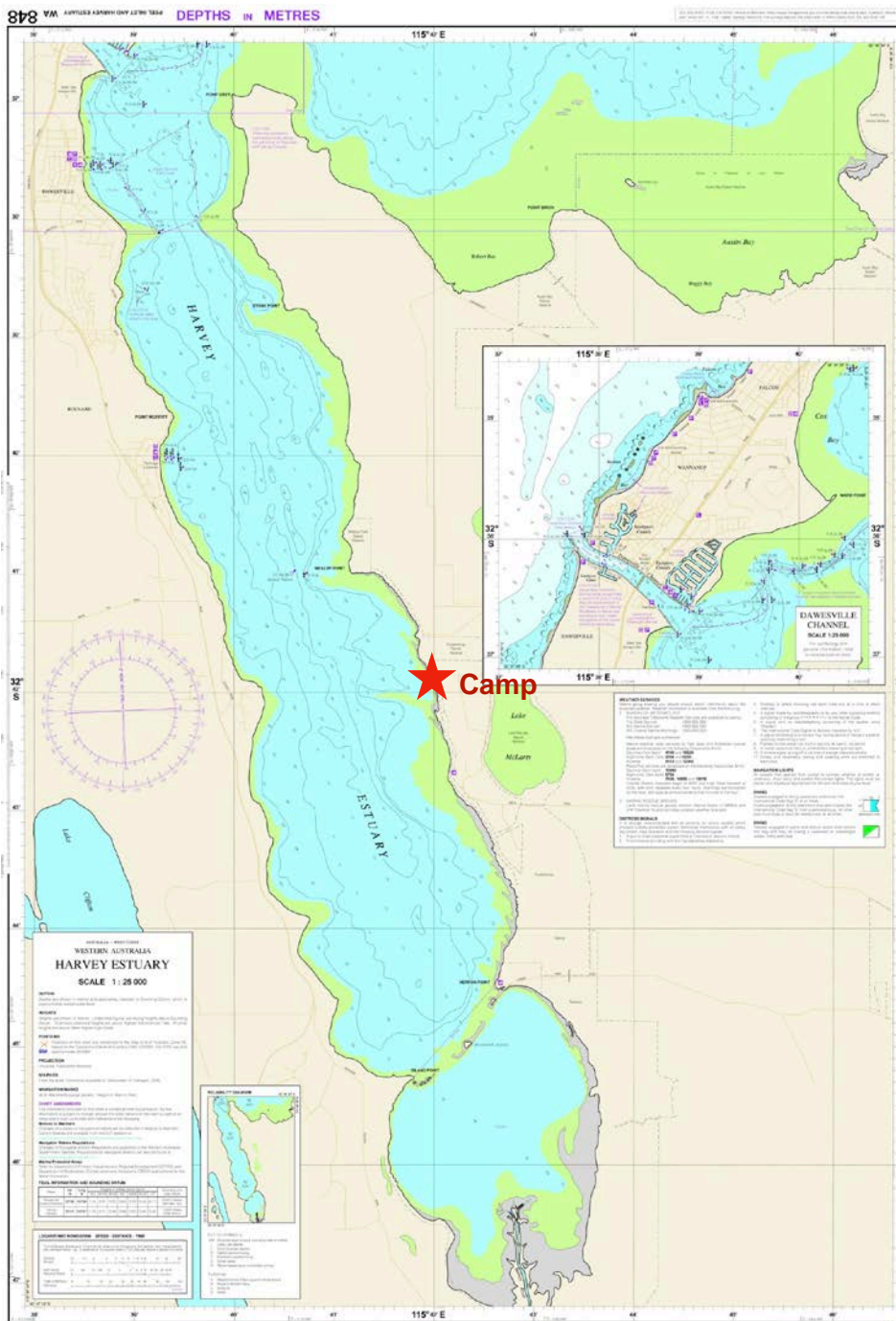
Western Australia

The Association for Gaff-Rig and Traditional Sailing

Old Gaffers Association of Western Australia Inc.

NOTE: THE NEW DOT MARINE SAFETY REGULATIONS:

Safety Equipment Requirements		PROTECTED WATERS	
		Registrable Vessels	Non-registrable Vessels
REGISTRABLE VESSEL: Vessels including sailing vessels that are or can be propelled by mechanical power. NON-REGISTRABLE VESSEL: Tenders and sailing dinghies.		Includes rivers, lakes, estuaries, harbours and waters within 400 metres from the shore in unprotected waters but excludes Cambridge Gulf and Lake Argyle.	
 Recreational Skipper's Ticket (RST) The skipper of a recreational vessel, powered by a motor greater than 6 horsepower must hold an RST.		✓	NOT REQUIRED
 Lifejacket Carriage A lifejacket, as indicated in the table opposite, must be carried for every person on board.	Vessels smaller than 4.8 metres	✓ Minimum Level 100 MUST BE CARRIED	RECOMMENDED
	Vessels 4.8 metres and larger	✓ Minimum Level 100 MUST BE CARRIED	RECOMMENDED
 Lifejacket Wearing As indicated in the table opposite.	Children older than one and younger than 12	✓ Minimum Level 100 MUST BE CARRIED	RECOMMENDED
	Personal Water Craft	✓ Minimum Level 50S MUST BE WORN	
 Distress Beacon (in-date) A GPS enabled 406 MHz EPIRB OR If worn by at least one person, a GPS enabled P.L.B. Distress beacons must be in-date and registered with AMSA.		RECOMMENDED	RECOMMENDED
 Red and Orange Flares (in-date) At least two hand held red flares and two hand held orange flares must be carried.		RECOMMENDED	RECOMMENDED
 Electronic Visual Distress Signal (EVD) An electronic signalling device may be carried in lieu of flares I.E. a GPS enabled EPIRB or PLB (must be worn) is also carried.		RECOMMENDED	RECOMMENDED
 Marine Radio A HF or VHF marine radio on any Registrable Vessel when operating more than 4 nautical miles from shore in unprotected waters.		RECOMMENDED	RECOMMENDED
 Recommended Additional Safety Equipment It is recommended an anchor and line, a fire extinguisher and a means of removing water be carried.		RECOMMENDED	RECOMMENDED



HARVEY ESTUARY

Any questions please contact:

Michael Arthur on 0434 308 823 or via email at surfarthur@hotmail.com

Old Gaffers Association of Western Australia Inc.