



OGA
Western Australia
The Association for Gaff-Rig
and Traditional Sailing

Wellington Dam Rally

Cruise in Company

25 & 26 November 2023

Where: Wellington Dam, Potters Gorge camp ground

When: **Saturday: 10:00 to 10:30 start**
Sunday: 09:00 for a 15:00 finish

You are invited to come to Wellington Dam for two days of sailing and exploring! The water level is lower compared to last year, but still sufficient to explore this large piece of water. The plan is to stay at the Potters Gorge campsite and use the adjacent boat ramp. If camping is not your preference there are plenty of alternatives nearby and in Collie.

It is recommended that if you are interested in taking part that you visit the web site below and book a campsite. The Dowan Loop offers excellent sites at 28, 31, 34 and 36, as they are near the water's edge. However if these are booked then any site is fine. Some of these camping spots can take more than one tent so sharing a site is also a possibility.

[Potters Gorge | Explore Parks WA | Parks and Wildlife Service \(dpaw.wa.gov.au\)](https://www.dpaw.wa.gov.au)

From Mosman Park, driving carefully it took 2 hours 30 minutes to reach Potters Gorge. Some members have indicated that they will drive down on Friday. **IMPORTANT:** the road and footpath under the dam wall is closed, so anyone driving from the south to Potters Gorge will have to take an alternative route.

Please contact James Bennett if you intend taking part providing the following details:

Boat name	Sail number	DoT registration	Skipper's & crew names	RST	Radio type and call sign	Insurance confirmation	Emergency contact for all on board
-----------	-------------	------------------	------------------------	-----	--------------------------	------------------------	------------------------------------

All participants are to complete the C-Fleet self-assessment form and submit this to Jim Black prior to the event. Participating boats must have liability insurance cover for up to \$10 million.

The Potters Gorge camp ground is a well laid out, located in a Jarrah and Marri Forest with toilets and camp kitchens. See map overleaf. There is no potable drinking water on site so please bring your own. Likewise, there are no shower facilities or power. Each camp site has its own fire pit, so if the prevailing fire restrictions permit, consider bringing some wood with you. Last year we gathered around one fire pit for a very enjoyable evening.

A review of the weather conditions (in particular any bush fire warnings) will take place during the week prior to the event and at 5pm on Friday 24 November. If any last minute communications are necessary these will be via SMS/phone. The program is broadly as follows but may be altered to suit the prevailing weather conditions on each day.



OGA

Western Australia

The Association for Gaff-Rig and Traditional Sailing

Saturday 25 November

- Depending how many participants are camping on Friday night, the plan would be to set sail around 10.30am
- There will be a safety briefing and review of the day before we depart the foreshore
- Bring a packed lunch and plenty of water as the plan will be to sail all day, anchoring or landing on a beach for lunch
- Saturday night will be social around a camp fire, so please bring pre-dinner nibbles, musical instruments and a good story to share!
- Bring any new boating, camping tech', bikes and other equipment along for a show and tell

Sunday 26 November

- Note that Potters Gorge campsites are to be vacated by 10am unless you are staying on Sunday night. Cars and trailers can be reparked near the boat ramp
- We will aim to get sailing by 9.30-10am
- After lunch on the lake, sail back to Potters Gorge and arrive by 15:00
- Wrap up and farewell at 15:30 -16:00

Monday 27 November

- If anyone is staying over then a morning sail, walk or mountain bike ride is on the cards. The café is now open on Mondays!

Safety

- All participants are responsible for their own boat and the safety of their crew. Skippers are to ensure that their boat is well prepared for this event. A safety briefing will be held on each day. Study the attached Boating Guide
- The water level is lower than previous years, so please keep a sharp lookout for tree stumps!
- The organisers have the right to cancel the sail if the weather conditions are adverse, however it is the Skipper's responsibility to decide whether to start or withdraw
- **Note;** Outboard engines equal to and less than 6hp are now permitted. See the attached Boating guide.
- All participants must be confident that they can recover their boats from a capsize without outside assistance, and the ability/equipment to retrieve crew or others from the water after a man-overboard incident.
- In preparing your boats for the weekend we require as a minimum that the following equipment is carried in addition to the equipment listed in the C-Fleet self-assessment form.
 - Lifejackets/PFDs for all crew
 - 2 x orange smoke flares
 - A VHF marine radio (waterproof or in a sealed bag) we will use **channel 72 VHF**
 - Good anchoring gear (boats can be hauled up the beach, but we would recommend anchoring off the beach, with a stern line secured to a second anchor)
 - A robust torch
 - Water proof clothing
 - First aid kit & suncream
 - Spare rope (towing, additional mooring lines, and to cover breakages)
 - Dry bags for spare clothes and camping gear

Camping

- All food and drinks are BYO (however good coffee is to be shared!)
- The camping ground is basic and has no power, potable water or shower facilities, so please bring your own water for drinking and cooking, and perhaps a solar shower.
- There are toilet blocks and covered camp kitchens with BBQ's (no sinks) throughout the camping area,
- Open fires are permitted, unless the Parks and Wildlife alters the restricted fire dates.
- Mosquitoes and bush flies may be an issue so please bring repellent, long sleeved shirts and trousers
- Bring warm clothes and a good tent
- WE strongly suggest that food and rubbish is kept in plastic containers, as the local parrots are expert thieves!

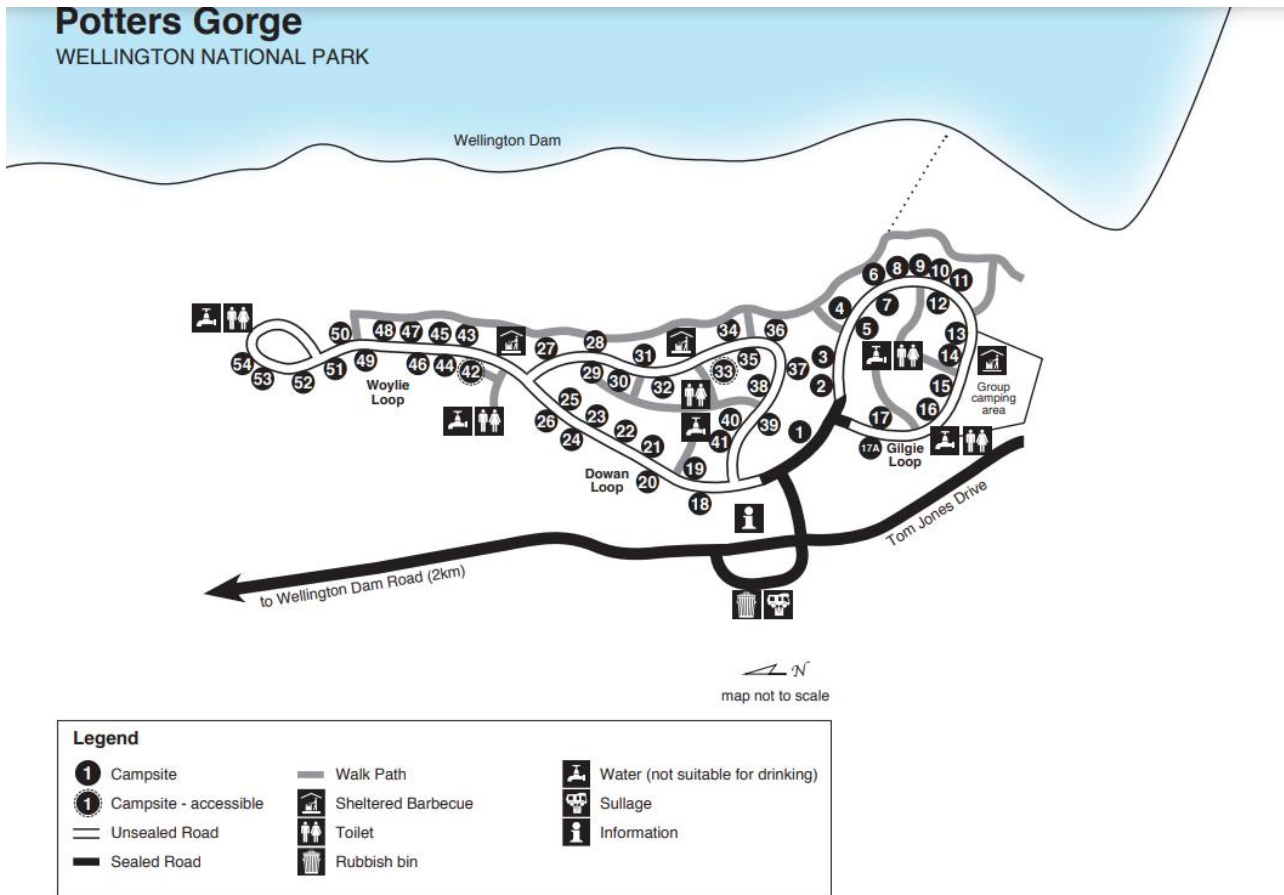


OGA

Western Australia

The Association for Gaff-Rig and Traditional Sailing

- The kiosk/café near the dam serves a reasonable coffee and food. Its current advertised hours are 9am to 5pm, The kiosk is now open every day except for Tuesday. [Kiosk At The Dam Menu - Wellington Dam Kiosk](#)



The boat ramp is 200m to right (south) along the Tom Jones Dr as shown on the above map

Any further questions - please ask!

James Bennett on 0419 969 405 e- mail: jamesnbennett@bigpond.com

or Jim Black on 0418 918 050 e-mail: jimblack.marine@inet.net.au

campsite

To Collie

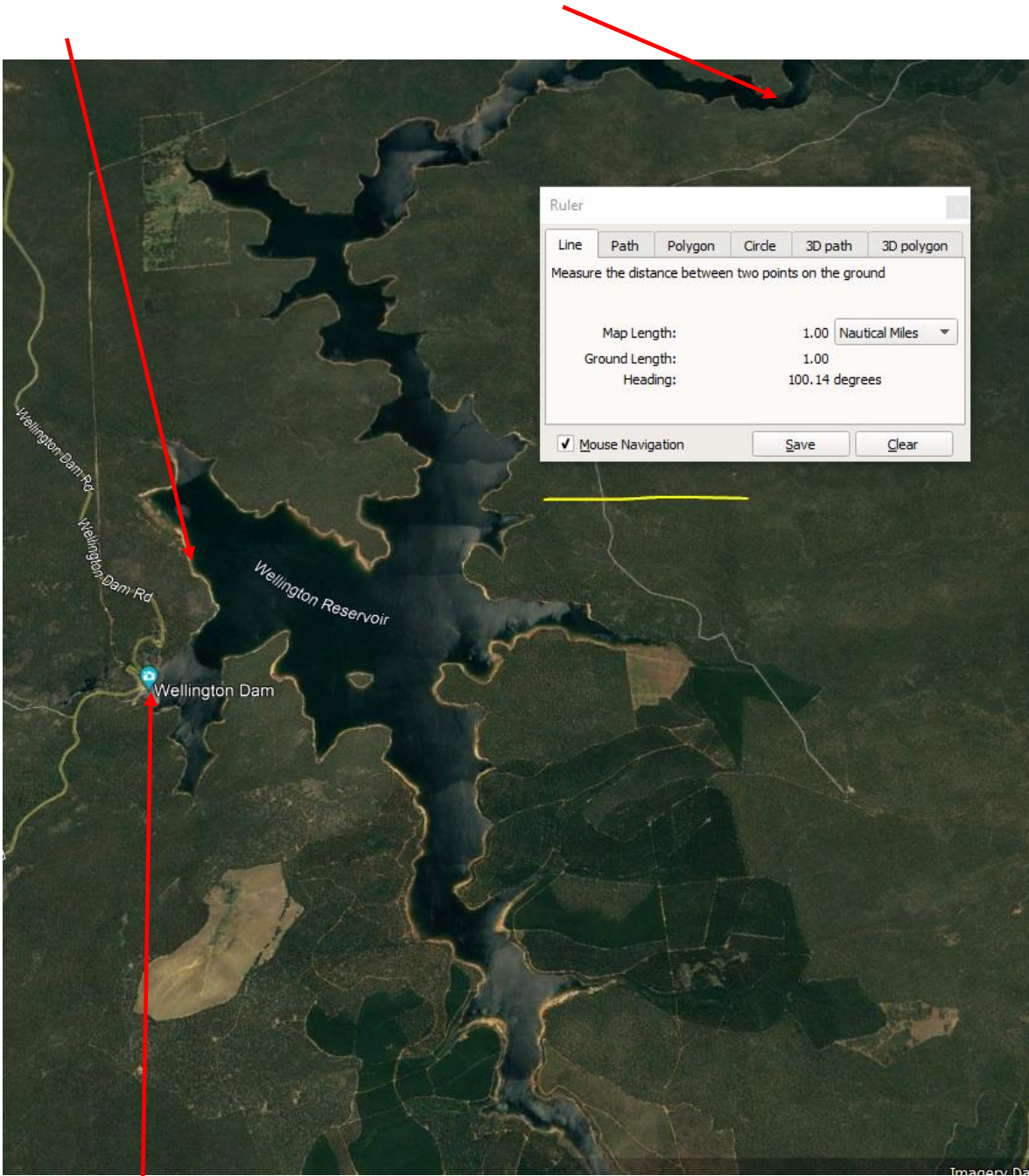
Old Gaffers Association of Western Australia Inc.



OGA

Western Australia

The Association for Gaff-Rig
and Traditional Sailing



The café and dam wall

Yellow line indicates 1 nautical mile (approx)